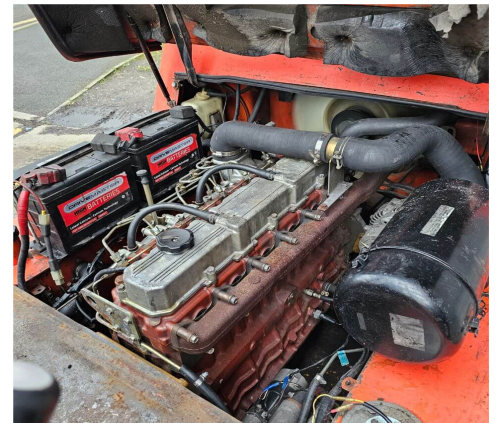


## F0130 - 4.0 Ton Diesel Counterbalance Forklift



<b>Make</b>	Nissan	<b>Hyd Lever Type</b>	Mechanical (Single) Lever
<b>Model</b>	F04D40Q	<b>Hyd Functions</b>	3 available (2 standard)
<b>Type</b>	Diesel Counterbalance	<b>Lift Height (MM)</b>	4700 mm Triplex
<b>Capacity (KG)</b>	4000 KG @ 500 mm LC	<b>Closed Height (MM)</b>	2285
<b>Year</b>	2005	<b>Free Lift (MM)</b>	1200
<b>Hours</b>	20750	<b>Engine</b>	Mitsubishi S6S
<b>Attachment(s)</b>	Standard Fork Carriage	<b>Tank Capacity</b>	115 Litres

This Nissan F04D40Q is a 4000kg Diesel powered counterbalance forklift truck fitted with a container spec 4700mm full free lift triplex mast. This truck has 3rd hydraulics available with 2nd as standard for lift/lower and tilt functions, and runs on the Mitsubishi S6S diesel engine. **This machine has our 3\* bodywork condition rating (Good) and has been regularly serviced and maintained by CAM Fork Lift Trucks in it's lifetime from new.**

**£12,250.00 + VAT**

**Standard Warranty:** 30 Days Parts and Labour

**Please note:** the above detailed equipment shall be fully serviced and hold a new Thorough Examinations Certificate prior to being delivered.

Interested? For more information contact CAM Fork Lift Trucks on the details below:

**Phone:** 0114 243 3332 **Email:** sales@camforklifts.co.uk