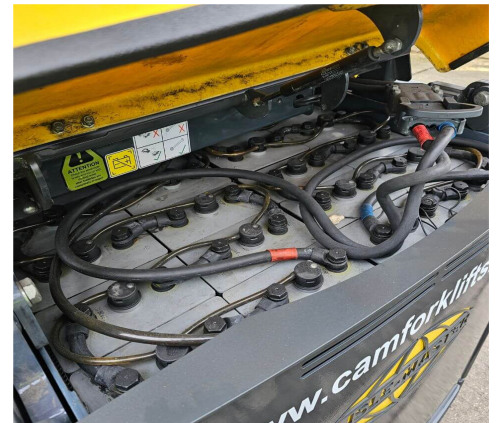


## F0870 - 2.0 Ton Electric Articulated Forklift



<b>Make</b>	Aisle-Master	<b>Hyd Lever Type</b>	Mechanical (Single) Lever
<b>Model</b>	AM20SHE	<b>Hyd Functions</b>	4 incl. Reachforks
<b>Type</b>	Electric Articulated Forklift	<b>Lift Height (MM)</b>	7250 mm Triplex
<b>Capacity (KG)</b>	2000 KG @ 500 mm LC	<b>Closed Height (MM)</b>	3385
<b>Year</b>	2018	<b>Free Lift (MM)</b>	2485
<b>Hours</b>	15500	<b>Battery</b>	48V 930Ah
<b>Attachment(s)</b>	Kooi Reachforks	<b>Charger</b>	Fronius Selectiva 4090 intelligent charger

This Aisle-Master AM20SHE is an electric powered articulated forklift truck fitted with a 7250mm full free lift triple mast, and Kooi Reachforks attachment for lifting extended loads. This truck also has 3rd hydraulics as standard for lift/lower, tilt and reach functions, and comes complete with high-capacity 930Ah traction battery and the renowned Fronius Selectiva intelligent charger for optimised battery charging and longevity. **This machine has our 4\* bodywork condition rating (Great) and has been regularly serviced and maintained by CAM Fork Lift Trucks from new.**

£29,995.00 + VAT

**Standard Warranty:** 30 Days Parts and Labour

**Please note:** the above detailed equipment shall be fully serviced and hold a new Thorough Examinations Certificate prior

Interested? For more information contact CAM Fork Lift Trucks on the details below:

**Phone:** 0114 243 3332 **Email:** sales@camforklifts.co.uk