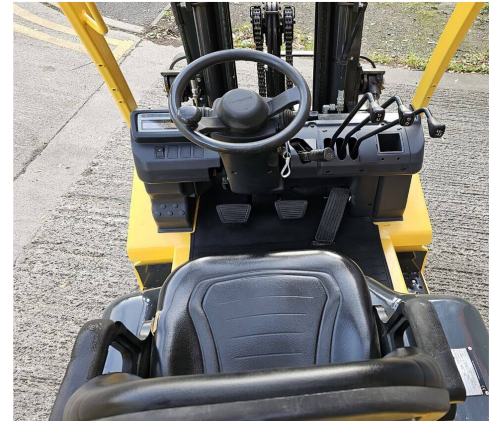


F0769 - 2.5 Ton Diesel Counterbalance Forklift



Make	TCM	Hyd Lever Type	Mechanical (Single) Lever
Model	Y1D2A25H	Hyd Functions	3 incl. Sideshift
Type	Diesel Counterbalance	Lift Height (MM)	4300 mm Triplex
Capacity (KG)	2500 KG @ 500 mm LC	Closed Height (MM)	1990
Year	2016	Free Lift (MM)	1500
Hours	3300	Engine	Nissan QD32
Attachment(s)	Hook On Sideshifter	Tank Capacity	66 Litres

This Nissan Y1D2A25H is a 2500kg diesel powered counterbalance forklift truck fitted with a container spec 4300mm full free lift triple mast, load backrest, and hook on sideshift attachment. This truck also has 3rd hydraulics as standard for lift/lower, tilt and sideshift functions, and runs on the extremely robust Nissan QD32 engine for high reliability. **This machine has been fully painted and refurbished to an excellent finish via our workshop and dedicated forklift spray booth.**

£12,977.00 + VAT

Standard Warranty: 30 Days Parts and Labour

Please note: the above detailed equipment shall be fully serviced and hold a new Thorough Examinations Certificate prior to being delivered.

Interested? For more information contact CAM Fork Lift Trucks on the details below:

Phone: 0114 243 3332 **Email:** sales@camforklifts.co.uk