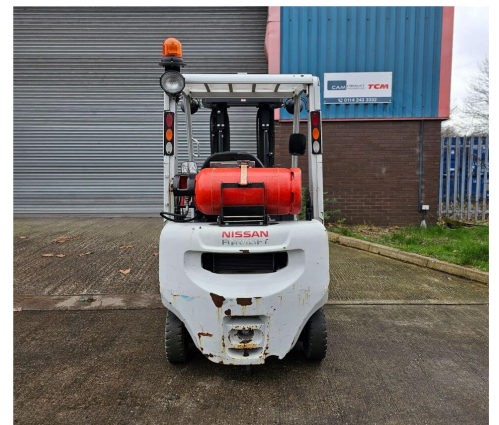
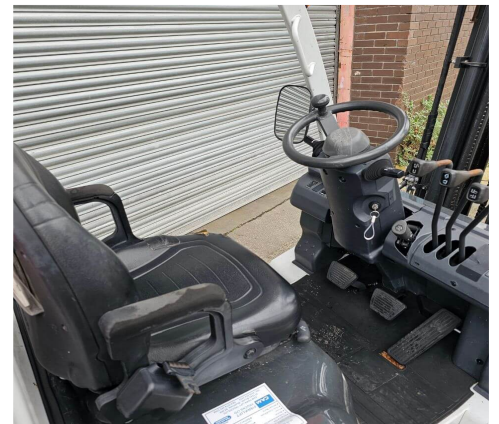


F0669 - 1.5 Ton LPG Counterbalance Forklift



Make	Nissan	Hyd Lever Type	Mechanical (Single) Lever
Model	P1D1A15LQ	Hyd Functions	3 incl. Sideshift
Type	LPG Counterbalance	Lift Height (MM)	4750 mm Triplex
Capacity (KG)	1500 KG @ 500 mm LC	Closed Height (MM)	2145
Year	2014	Free Lift (MM)	1235
Hours	4000	Engine	Nissan K21
Attachment(s)	Hook On Sideshifter	Tank Capacity	LPG Bottle 18KG

This Nissan P1D1A15LQ is a 1500kg LPG powered counterbalance forklift truck fitted with non-marking white tyres, a container spec 4750mm full free lift triplex mast, load backrest, and hook on sideshift attachment. This truck also has 3rd hydraulics as standard for lift/lower, tilt and sideshift functions, and runs on the extremely reliable Nissan K21 engine. **This machine has been given our 3* bodywork condition rating (Good) and has been consistently well looked after and maintained in its lifetime at a previous client.**

£7,950.00 + VAT

Standard Warranty: 30 Days Parts and Labour

Please note: the above detailed equipment shall be fully serviced and hold a new Thorough Examinations Certificate prior to being delivered.

Interested? For more information contact CAM Fork Lift Trucks on the details below:

Phone: 0114 243 3332 **Email:** sales@camforklifts.co.uk