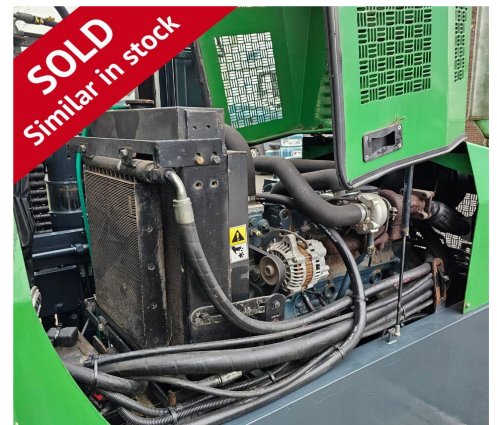


## F0452 - 8.0 Ton Multi-Directional Forklift



<b>Make</b>	Combilift	<b>Hyd Lever Type</b>	Mechanical (Single) Lever
<b>Model</b>	C8000	<b>Hyd Functions</b>	4 available (3 standard)
<b>Chassis</b>	Multidirectional Sideloader	<b>Lift Height (MM)</b>	3100 mm Duplex
<b>Fuel Type</b>	Diesel	<b>Closed Height (MM)</b>	2900 mm
<b>Capacity (KG)</b>	8000 KG @ 500 mm LC	<b>Free Lift (MM)</b>	Full Free Lift
<b>Year</b>	2004	<b>Engine</b>	Kubota V3300
<b>Hours</b>	3655	<b>Tank Capacity</b>	100 Litres
<b>Attachment(s)</b>	Standard Fork Carriage	<b>Condition</b>	Pre-Owned
<b>Price</b>	26000		

This Combilift C8000 is a 8000kg Diesel powered multi-directional forklift truck fitted with a 3100mm duplex mast and standard "fork only" carriage. **This machine has our 4\* bodywork condition rating (Great) and has been consistently well looked after in its lifetime on our short-term hire fleet.**

£26,000.00 + VAT

**Standard Warranty:** 30 Days Parts and Labour

**Please note:** the above detailed equipment shall be fully serviced and hold a new Thorough Examinations Certificate prior

Interested? For more information contact CAM Fork Lift Trucks on the details below:

**Phone:** 0114 243 3332 **Email:** sales@camforklifts.co.uk