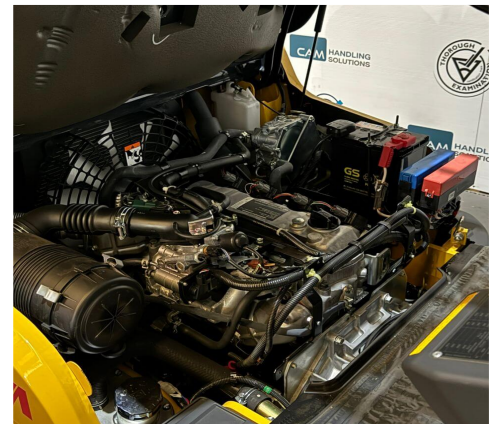


SP1048 - TCM FGE25-E2 LPG Counterbalance Forklift Truck



Make	TCM	Hyd Lever Type	Mechanical Lever
Model	FGE25-E2	Hyd Functions	3 incl. Sideshift
Chassis	Gas Counterbalance Forklift Truck	Lift Height (MM)	4700 mm Triplex FFL
Fuel Type	LPG	Closed Height (MM)	2145 mm
Capacity (KG)	2500 KG @ 500 mm LC	Free Lift (MM)	1130 mm
Year	2021	Engine	GCT Model GK21
Hours	40	Fuel Capacity	Gas Bottle 18KG
Attachment(s)	Hook On Sideshifter	Condition	As New

This as-new 2022 TCM FGE25-E2 is an LPG forklift fitted with a container spec mast and sideshift. The LPG engine meets Euro Stage V requirements, recirculating the exhaust gas back through the system after cooling to limit harmful emissions.

This machine has our 5* bodywork condition rating (As New).

SPECIAL OFFER ~~£21,850.00 + VAT~~
£16,350.00 + VAT

Warranty: 12 Months or 1,000 Hours Parts and Labour

Please note: the above detailed equipment shall be fully serviced and hold a new Thorough Examinations Certificate prior to being delivered.

Interested? For more information contact CAM Fork Lift Trucks on the details below:

Phone: 0114 243 3332 **Email:** sales@camforklifts.co.uk