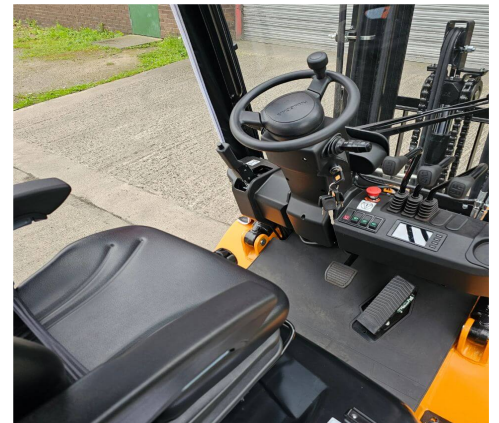


## SP1121 - Hangcha CPD25-XE Lithium Forklift Truck



<b>Make</b>	Hangcha	<b>Hyd Lever Type</b>	Mechanical Lever
<b>Model</b>	CPD25-XEY2-SI	<b>Hyd Functions</b>	3 incl. Sideshift
<b>Chassis</b>	Lithium Counterbalance Forklift with Full Cab	<b>Lift Height (MM)</b>	4500 mm Triplex
<b>Fuel Type</b>	Lithium	<b>Closed Height (MM)</b>	2114 mm (OHG 2165 mm)
<b>Capacity (KG)</b>	2500 KG @ 500 mm LC	<b>Free Lift (MM)</b>	1068 mm
<b>Year</b>	2023	<b>Battery &amp; Charger</b>	80V Li-ION 3-PH
<b>Hours</b>	6	<b>Cab</b>	Full Cabin with Heaters
<b>Attachment(s)</b>	Integral Sideshifter	<b>Condition</b>	As New

This as-new 2023 Hangcha CPD25-XEY2-SI is a 4-wheel Li-ION electric counterbalance forklift with 4500mm triplex mast and sideshift. Featuring an integrated lithium-ion battery and charger, optimised for opportunity charging and performance, it delivers efficient, low-maintenance operation with all-round capability, ideal for indoor & outdoor applications.

**SPECIAL OFFER** ~~£22,291.00 + VAT~~  
**£18,050.00 + VAT**

**Warranty:** 12 Months or 1,000 Hours Parts and Labour

**Please note:** this equipment shall be fully serviced and hold a new Thorough Examinations Certificate prior to delivery.

Interested? For more information contact CAM Fork Lift Trucks on the details below:

**Phone:** 0114 243 3332 **Email:** sales@camforklifts.co.uk