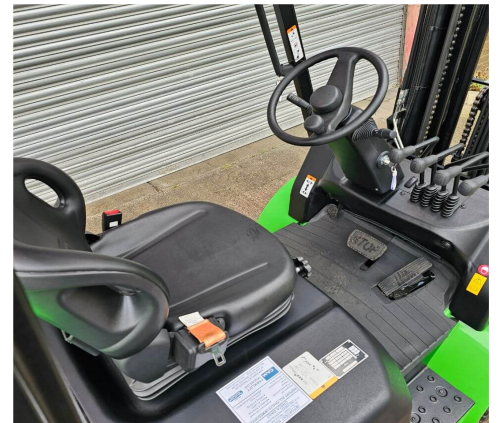


SP1109 - EP EFL353 Lithium Forklift Truck



Make	EP Equipment	Hyd Lever Type	Mechanical Lever
Model	EFL353	Hyd Functions	3 Functions (+1 Available)
Chassis	Lithium Counterbalance Forklift	Lift Height (MM)	4800 mm Triplex
Fuel Type	Lithium	Closed Height (MM)	2265 mm
Capacity (KG)	3500 KG @ 500 mm LC	Free Lift (MM)	1170 mm
Year	2023	Battery	80V Li-ION 280Ah
Hours	5	Charger	80V Li-ION 3-PH
Attachment(s)	Integral Sideshifter	Condition	As New

This as-new 2023 EP EFL353 is a 4-wheel Li-ION electric counterbalance forklift with 4800mm triplex mast, sideshift and 4th hydraulic function piped to carriage. Featuring an integrated lithium-ion battery and charger package, optimised for opportunity charging and consistent power delivery, it offers efficient, low-maintenance operation with the added flexibility to run a wide range of hydraulic attachments, ideal for demanding indoor and outdoor applications.

SPECIAL OFFER ~~£24,350.00 + VAT~~
£17,500.00 + VAT

Warranty: 12 Months or 1,000 Hours Parts and Labour

Please note: this equipment shall be fully serviced and hold a new Thorough Examinations Certificate prior to delivery.

Interested? For more information contact CAM Fork Lift Trucks on the details below:

Phone: 0114 243 3332 **Email:** sales@camforklifts.co.uk